

Restricted Circulation – Edition 1.0



FS Airlines Client – User Guide

Supplement 1.1022-14A



This manual has been approved by and issued on behalf of:

Operations Director
KORYO Air (Virtual)

Sunan Airport
Pyongyang
People's Democratic Republic of Korea

Client overview

KORYO Air (Virtual), uses the FS Airlines 'Client' to track all of its flight operations, in addition to monitoring pilot performance.

By our operation manual **ONLY** this software is approved in our company. FS Passengers and ACARS systems can be used as additional software if pilot wants, but using of FS Airlines is mandatory, because we will count flights which are made only on FS Airlines client

You can download the latest version of the FS Airlines 'Client' by visiting www.fsairlines.net and clicking on downloads section. Registration can be handled via our Pilot Recruitment Portal at www.flykoryoair.com.

Using the 'Client' is very straight forward, and is available in a number of languages to include our core languages of English and Russian. The 'Client' can be run both independently of flight simulator (for the purposes of checking your current flight information etc), as well as a plugin facility within your preferred flight simulator programme (FS9/FSX etc). If you wish to operate the 'Client' as a plug in, please ensure that you checked installation of plugins related to flight simulator, during installation of client. Once installed you can access the 'Client' at any time by pressing command **F**.

Please note – In order for your flight to be accurately monitored and recorded in our operations database, you will need to ensure that the FS Airlines 'Client' is run throughout the duration of your particular flight. Failure to do this, will result in all the data for your flight being lost, and will require you to commence your flight from the beginning.

If, once you've familiarised yourself with this manual, you have any further queries, please do not hesitate to contact our Operations Control Centre by clicking on the image below.



Starting with client operations-LOGGIN IN

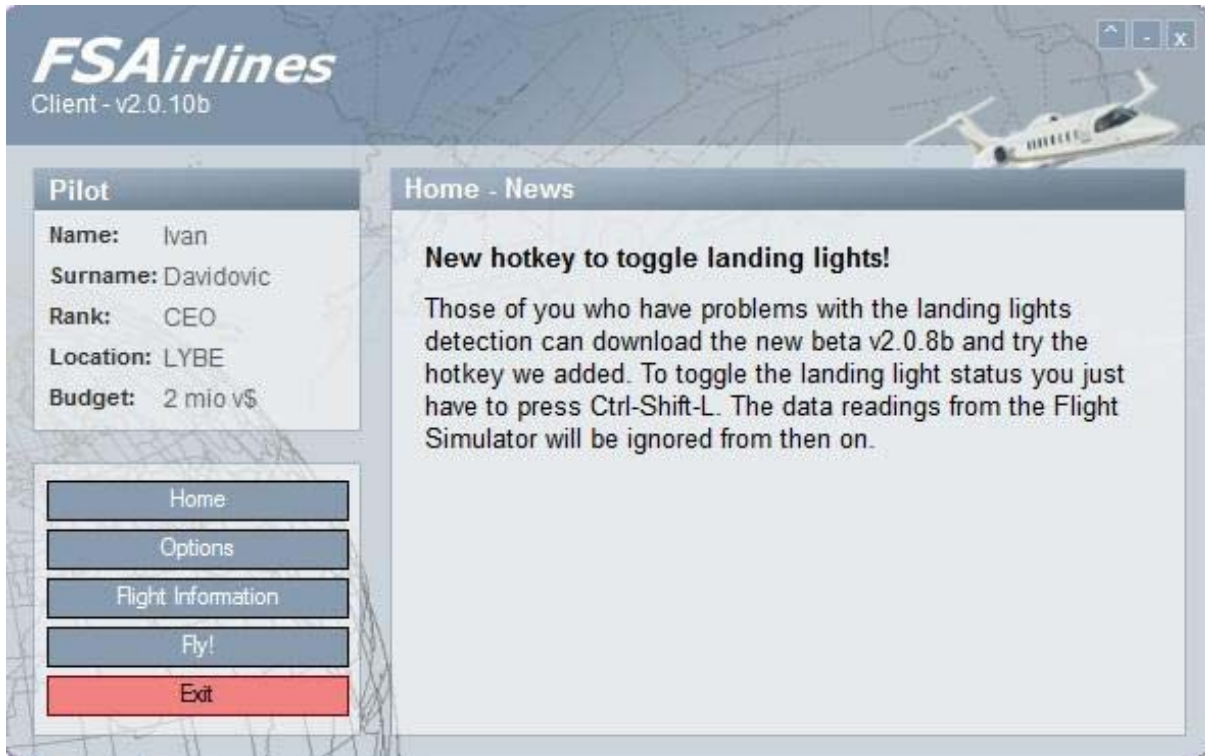
Once you have started your preferred flight simulator programme, and created your booked flight i.e. Pyongyang ZKPY/Beijing ZBAA on an Airbus A319 aircraft, and are sitting on stand with engines off, and parking brakes applied, you can start the FS Airlines 'Client'.

As previously mentioned, there are two methods of starting the 'Client'. Once started, you will see the following login box:



This is where you will need to enter your Username and Password, both of which you selected when you registered as a KORYO Air (or KORYO Connect) pilot. Once you have completed both boxes click on the **Login box**, and this will then connect you to the FS Airlines 'Client' server.

This is the **HOME PAGE** of the FSAirlines client, and on this page you can the latest news for the



FSAirlines system, particularly any enhancements that have been made to the client. In the top left hand corner of the box you'll find your personal details. Please make sure when you LOG IN that you see your name. **Cheating and using other accounts for flying is strictly forbidden, so please confirm your identity when you have finished LOGGING IN**

Options

- ☞ **Automatic LOG IN at start-up**-The Client has the option to save your user name and password, which when selected will log you in automatically. We don't recommend this option, as it is possible for your log in data to be stolen.
- ☞ **Use simple fuelling method**-Recommended. This will permit the FSAirlines Client to automatically fuel your aircraft with the amount of fuel you enter (more details below).
- ☞ **Play sounds**-Client has the ability to play an audible signal when you receive a penalty, or more pleasantly when you land, or arrive on stand safely.
- ☞ **Flight monitor Tracking**-If activated, the client sends regular position updates to the website (Flight monitor-see fsairlines website) during your flight. This function sometimes can cause issues if you have a bad internet connection, so try turning it off you experience problems with the Client for example black screen

🔊 **Display text in Flight Simulator**-Show messages about flight state, failures and penalties inside your flight simulator. This doesn't affect the abort message which is always shown if you try to cheat on flight.

Step One

Now when you set up your client settings, you are ready to start to operate with the client. Click on **Flight Information**. On this page you will get all details relevant to your flight. In this section you will find: Departure/Arrival airport; Departure/Arrival time; Distance; Flight duration; Fuel price. These details are relevant for your flight. On this page also you will find information about aircraft state: Aircraft type; Aircraft registration; Fuel on board; Aircraft value; Aircraft state in percentages; for engine, landing gear and maximum allowable cargo storage. You will see picture like this:



FSAirlines
Client - v2.0.10b

Pilot	Flight Information	
Name: Ivan	Route	
Surname: Davidovic	Departure: LYBE	Destination: LIRF
Rank: CEO	Dep.-Time: 1200	Arr.-Time: 1310
Location: LYBE	Distance: 396 nm	Duration: 67 min
Budget: 1 mio v\$	Passengers: 160	Fuel Price: 1.25 v\$ / l
	Aircraft	
	Type: B738	Registration: I-BMAZ
	Engine: 99.58 %	Fuel(tanked): 2872 kg
	Gear: 99.49 %	Hull: 99.06 %
	Cargo: 4999 kg	Value: 78072805 v\$

Navigation buttons: Home, Options, Flight Information, Fly!, Exit

Please note that our flight tracker (client) can simulate failures during flight. Because of this please pay close attention to the state of the aircraft hull. If the state is showing **94%** or less **DO NOT FLY THIS AIRCRAFT**. Most of the time you will be able to find an alternative aircraft to operate your chosen route, and if not please contact our **Maintenance Team** by e-mail.

Step Two

Now that you've checked that your flight information is correct, we're ready to continue onto the next step. Now click on **FLY** button which is situated on the left hand side just below the Flight Information key. The Client will then change to look like this:



Now you will need to set the correct fuel needed for your chosen flight. This integrated system will automatically tank the amount you enter here, with your aircraft in Flight Simulator. Please calculate how much fuel you need for your flight. The FSAirlines client will assist you by providing a fuel projection based on your flight, and this information will be available as part of the flight briefing when you first select your route. If you take on too much fuel, it is highly likely that you will end up with a negative flight revenue status, in which case you will lose money for both yourself and KORYO Air. If you want to be certain of your required fuel load, there are a number of suppliers who will calculate it for you, once such site is **Fuel Calculator - Courtesy of Aero Texas**

NOTE: You will see this picture if you don't check option "Use simple fuelling method" which can be found in the "Options" menu. If you check this option you will see picture like this:



If you see this, you will need to enter a cumulative amount of fuel and the FSAirlines Client will automatically divide the fuel into your tanks. Please note that any overweight, in the case of this example 4470 kg, you will need to reduce the weight of the payload before you'll be able to start flying.

It's worth noting at this stage, how much fuel is already loaded on your aircraft, this is shown as 'Initial Fuel', as this will form part of your total fuel load. In addition to the fuel load, you'll see basic information such as:

- Dry Operating Weight [kg]
- Passenger weight [kg]
- Cargo weight [kg]
- Take-off Weight [kg]
- Maximum Take-off Weight [kg]

Now that you have sufficient fuel for your flight, always allowing for additional contingency fuel in case of poor weather en-route, at your arrival airport or of course if you need to divert, we then click on the **“Fuel up”** button. Once pressed, the FSAirlines Client will load the fuel entered into your aircraft ready for the flight

Now click on **FLY** button and you will see picture like this:



Now you can minimise the FSAirlines Client and start your flight. Please note, that the FSAirlines Client must be open throughout the entire flight in order to record your progress. If for any reason you lose connection with the Client, your flight will be abandoned, and sadly, you'll have to restart from the beginning.

Finishing Your Flight

When you have arrived at the gate or parking stand of your planned destination and applied the parking brakes (You **MUST** always apply the Parking Brakes), your flight will have ended. You must now open the FSAirlines Client once again and complete your flight report, here you should include any of the following:

- Aircraft serviceability on arrival
- Poor flight planning and or low fuel status
- Weather Conditions during the flight

An example of what you might like to write is shown below:

Routine operation with no significant issues to report. Weather en-route favourable, although low visibility in the Pyongyang TMA. Aircraft fully serviceable on arrival UDD>

Once you have entered your flight report, please continue by clicking NEXT and then NEXT again, this will then show you how much money you have earned for both yourself and the company. Once this is displayed click NEXT one final time and this will then file your flight with our Operations Centre, and you can then start a new flight by going to FSAirlines.net and pressing on Book a Flight.



An Embraer E-175 Regional Jet of our wholly owned subsidiary KORYO Connect

Penalties

The FSAirlines Client has a number of penalties built in, which will be assigned to you and your flight if you show poor airmanship. It is therefore essential to fly with great accuracy and pay careful attention to the speed you are travelling at, both on the ground and in the air!

Here is the list of most of the penalties which FSAirlines client has:

- **Landing light ON above FL100**-Landing lights are primarily used for take-off and landing. During take-off landing lights must be turned on before you commence your take-off roll, and must remain on until you have passed through at least 1000ft. Once airborne you must ensure that your landing lights are switched off past 1000ft and before you reach 10,000ft

- **Landing lights OFF below FL100**-Once you have descended below 10,000ft on approach to your designated landing airfield, you need to ensure that you have switched on your landing lights. We recommend you do this as you pass through 8000ft, if you fail to have them switched on as you pass through 1000ft from the ground you will incur a penalty!
- **Over speed taxi**-During taxi, your speed must not exceed **25 knots** otherwise you will receive another penalty

All of these penalties will directly affect your flight rating, not to mention your Average Flight Rating, which in turn may lead to you being demoted, or worse still asked to leave the company. If you successfully complete your flights without any penalties you will receive a 100% rating, which will also ensure you receive the maximum amount of crew payment for the flight.

Emergency Situations

Emergencies, whilst rare, do happen. In accordance with the KORYO Air (and or KORYO Connect), Flight Operations Manual, if you feel that your aircraft and its load are in danger, for whatever reason, you must Divert to the nearest available airfield. Before starting an Emergency Diversion, you will need to open the FSAirlines Client, and click on the **DIVERT** button. **This option is ONLY to be used in an EMERGENCY.** When you press this button the Client will remain locked waiting for you to land. Once safely on the ground with Parking Brakes SET, you will finish your flight in the normal way, but will have to complete a full diversion report in the flight report box. If you experience an emergency and don't press the DIVERT button, your flight rating will drop down dramatically and you will require additional training etc.

Assistance

Help is on hand from our **Duty Operations Officer**

Here's to Happy Landings!